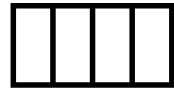
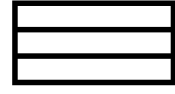


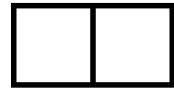
M CITY FOUR  
CONDOMINIUMS



MISSISSAUGA'S FUTURE  
STARTS HERE.



## A worthy addition.



---

### M City Is Set To Welcome Its Newest Member

It's been only a few short years since M City staked its claim as the definitive mixed-use community of Mississauga's future. In 2017, M City's first building – M1 – introduced as the tallest tower in Mississauga, started an unprecedented sales campaign that garnered attention across the country and beyond. Only a mere month later, M2 was launched as its twin counterpart and immediately enjoyed the same success. In 2018, M3 was revealed. A soaring 81-storey tower that set the new benchmark as Mississauga's tallest building, while setting new sales records and taking top prize as BILD's 'Project of the Year.' With M1, M2, and M3 now well under construction, it is time to present the next chapter in this spectacular story.

This is M4.



Illustration is artist's impression.

Design

Lifestyle

Interiors

Neighbourhood

Team

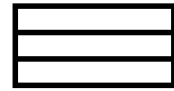


Illustration is artist's impression.

### The Ultimate Community

Designed by the internationally acclaimed urban planners Cooper Robertson, M City is a remarkable master-planned community. This 8-tower, 15-acre, 4.3 million sf community brings spectacular architecture, abundant green space and modern lifestyle amenities into one landmark neighbourhood. The site features over 2 acres of new parkland and a dedicated connection to the Mary Fix multi-use

trail and John "Bud" Cleary Park. Designed for pedestrians, dotted with shops and cafes along wide promenades, and only minutes from transit options, including the future Hurontario LRT, M City is the ultimate mixed-use community. It's walkable, connected and inviting. Steps from the city's prime attractions – arts and culture, shopping, dining, and schools – M City is where Mississauga's future lives.



## A modern expression.

---

### Welcome To M4

M4 is a striking product of contemporary design. Architecture that makes a statement with its dramatic cubist forms. Interiors that are built on a minimalist palette, with textured and layered finishes, and fresh, inviting spaces. Modern yet timeless, it continues the M City tradition of exceptional amenities and suites that are designed for real life. M4 nurtures, inspires and offers more than just a place to live.

## Form and function stacked to perfection.

---

### Modern. Minimal. Magnificent.

A single tower made up of four slender 'towerettes,' M4 eschews the typical built form. Defined by a collection of simple elegant vertical expressions that rise out of a dynamic podium and terminate at different heights in the sky.



Illustration is artist's impression.



Lifestyle

Interiors

Neighbourhood

Team



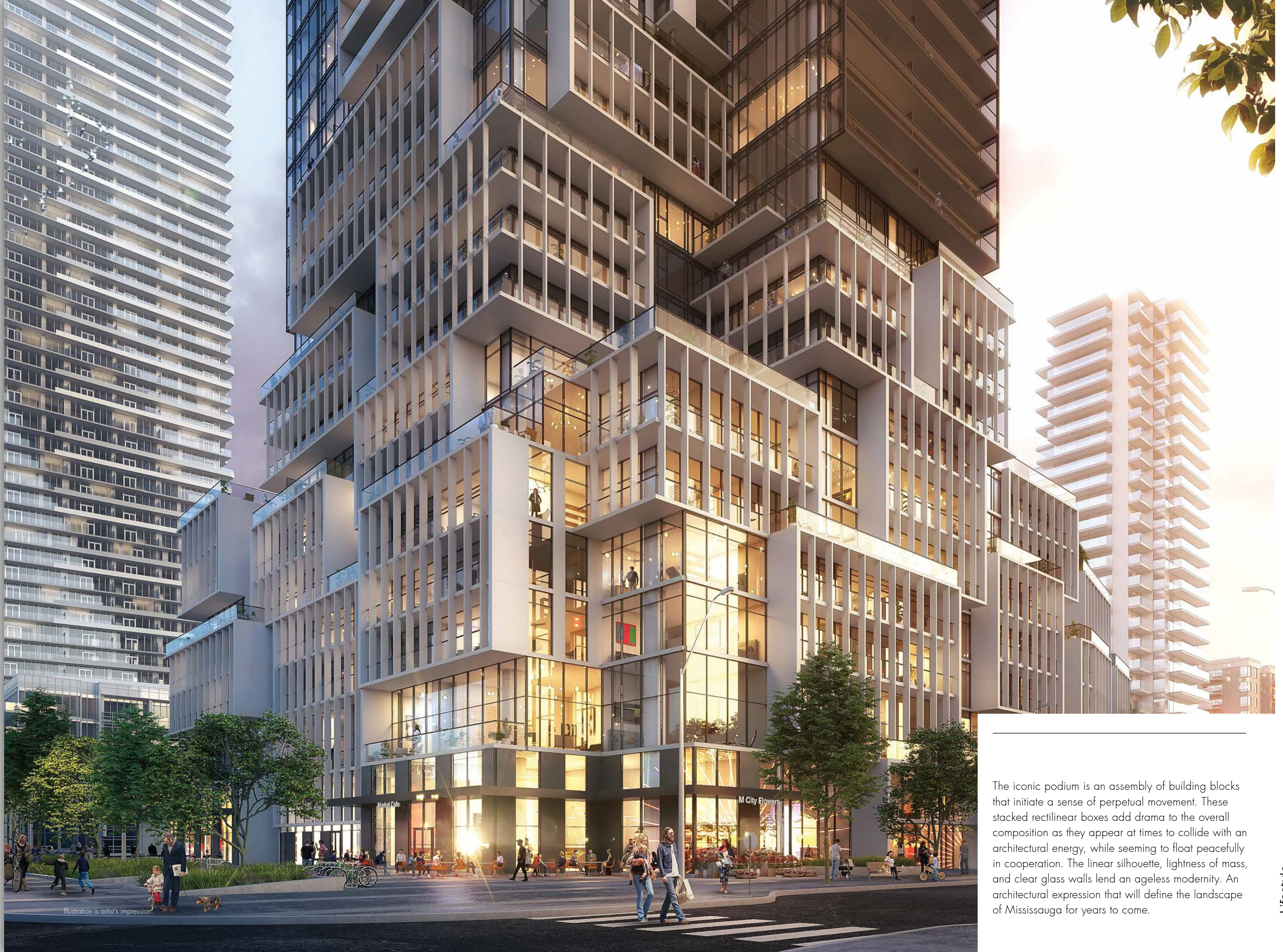


Illustration is artist's impression.

The iconic podium is an assembly of building blocks that initiate a sense of perpetual movement. These stacked rectilinear boxes add drama to the overall composition as they appear at times to collide with an architectural energy, while seeming to float peacefully in cooperation. The linear silhouette, lightness of mass, and clear glass walls lend an ageless modernity. An architectural expression that will define the landscape of Mississauga for years to come.



Illustration is artist's impression.

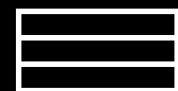
Lifestyle  
Interiors  
Neighbourhood  
Team



Illustration is artist's impression.

Lifestyle  
Interiors  
Neighbourhood  
Team

## Adding the extraordinary.



---

### A Resort You Can Call Home

Spread across three fantastic floors and weaving effortlessly between interior and exterior spaces, the amenities at M4 are simply exceptional. Defined by a sophisticated palette of neutral tones, natural textures and layered finishes, these chic spaces will transport you to a world of relaxation and play. From the Zen-inspired Nakaniwa Garden on Level Three to the sprawling main amenity terrace on Level Four, the fully-equipped fitness centre and yoga studio to the open-air saltwater pool on the podium rooftop, every level has something special to enhance and enrich your lifestyle.

Anwork: Pers Gleischer, Switzerland, 2015 © Scott Conroy / Coppley Patterns (DM), 2017, Coppley Patterns (DM), 2017, Coppley Patterns (DM) / courtesy Stephen Bulger Gallery



Illustration is artist's impression.

Designed by Cecconi Simone, the hotel-style lobby welcomes residents and their guests with elegant lounge seating, a linear fireplace, architectural lighting, a communal work area, and 24-hour concierge service.



Illustration is artist's impression.

The Zen-inspired Nakaniwa Garden is filled with the tranquil sounds of water cascading down a glistening rock face. In the centre of the courtyard is a rock sculpture garden atop a sparkling water plinth. A combination of hard- and soft-scaping, and carefully selected ornamental trees frame the lounge seating and outdoor yoga area with a sense of calmness and tranquility. The Nakaniwa Garden is the focal point of the interior amenities that surround it. Visible from the adjacent fitness centre, it can be accessed from the party room, yoga room and the elegant curved staircase that connects to the main outdoor amenity terrace above.

The adjacent indoor party room spills onto the Nakaniwa Garden. Here residents and their guests can enjoy this breathtaking courtyard at night as soft mood lighting envelopes the space, adding another dimension for the senses.



Illustration is artist's impression.



Illustration is artist's impression.

The chic party room with its commanding fireplace and intimate seating areas makes for great evenings with friends.





Illustration is artist's impression.

During the day, the party room is an equally elegant multipurpose space that can function as a co-working zone. Perfect for collaborating, conducting meetings or working alone.



Illustration is artist's impression.





Illustration is artist's impression.

### The Best Of Outdoor Living

The Terrace on Level Four is designed for alfresco living. With intimate seating and dining alcoves, barbecue stations, a TV lounge, games area and playground for the young ones, this outdoor getaway is impressive in scale yet intimate and inviting. In a quiet corner of the terrace, hidden behind ornamental grasses is the Retreat (as seen

at the centre-rear of this image). Set apart by its sculptural seating and privacy landscaping, it's made for more restful pursuits. On the podium rooftop is the Level Eight outdoor saltwater pool. The pool level offers a resort-style sun deck with chaises and plush daybeds, couch seating, change rooms, and south views of the 2-acre public park below.

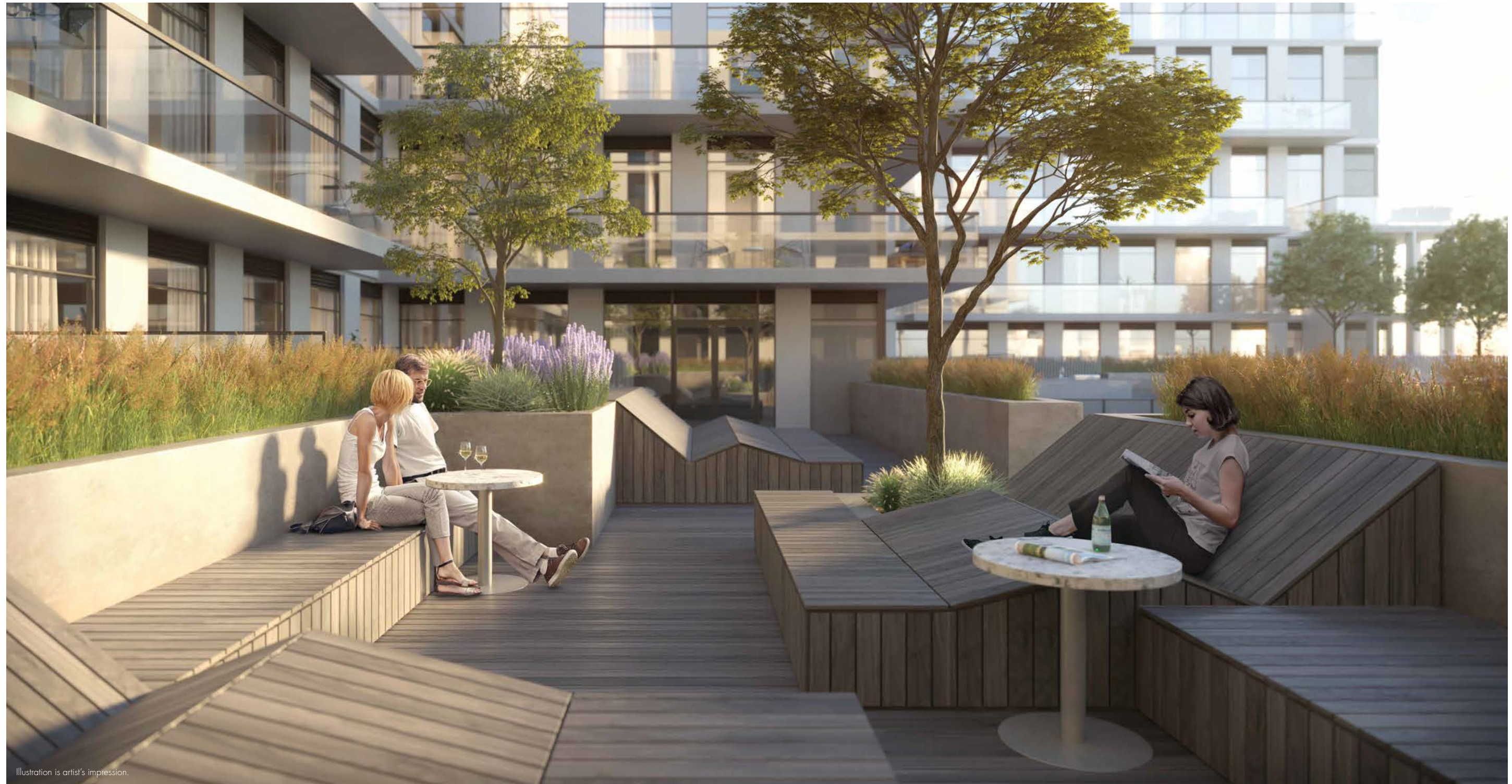


Illustration is artist's impression.

Sheltered from the main amenity terrace is the Retreat. This one-of-a-kind space features architectural seating that appears to rise from the decking underfoot like folded wooden sculptures. A tranquil hideaway where you can enjoy private conversations, get lost in a good book or savour a glass of wine.



Illustration is artist's impression.



Illustration is artist's impression.



Illustration is artist's impression.

Outfitted with chaises, plush daybeds and couch seating, and offering south views of the 2-acre park below, the outdoor saltwater pool and sun deck offers that resort-style escape that's only an elevator ride away.



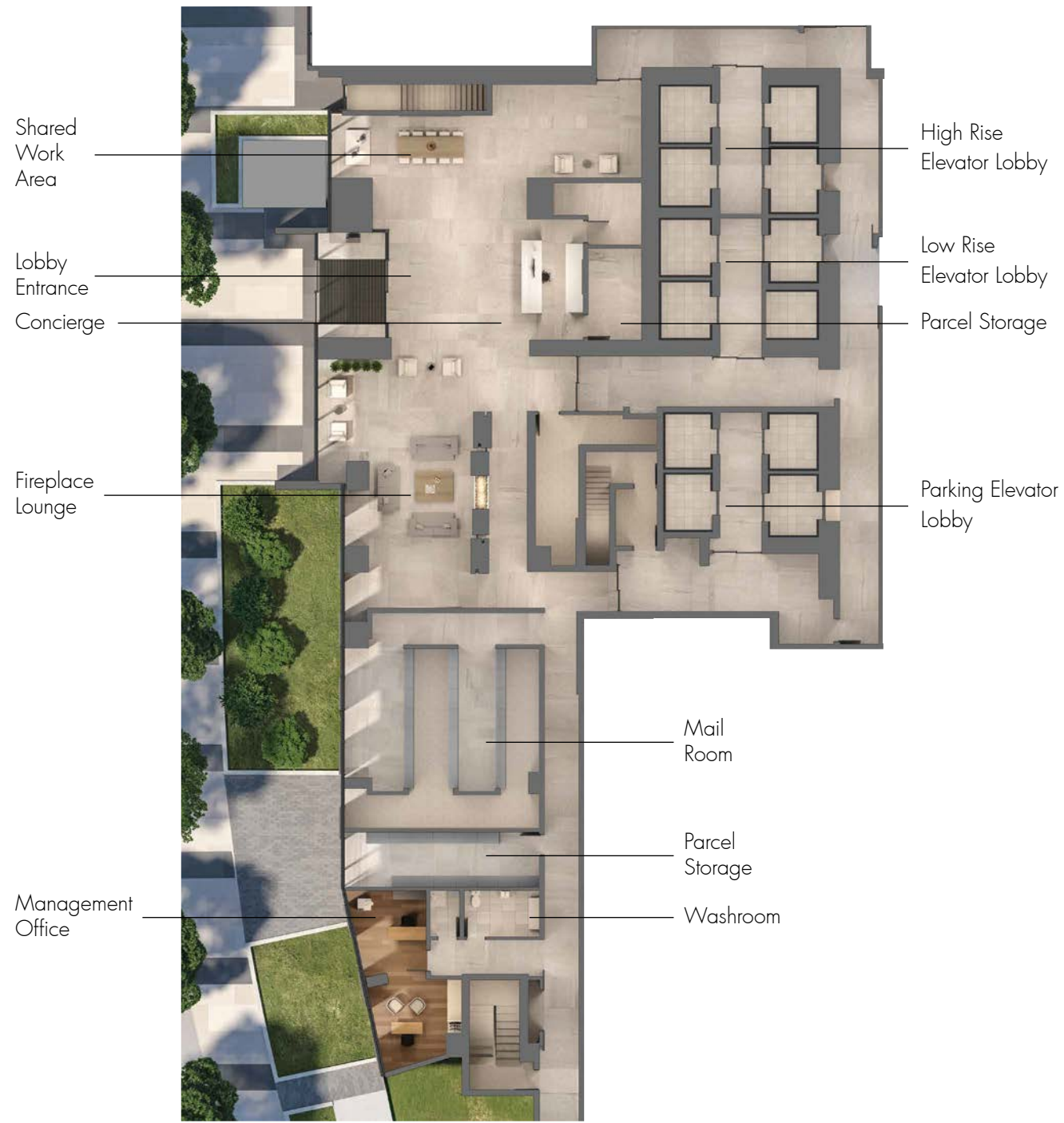
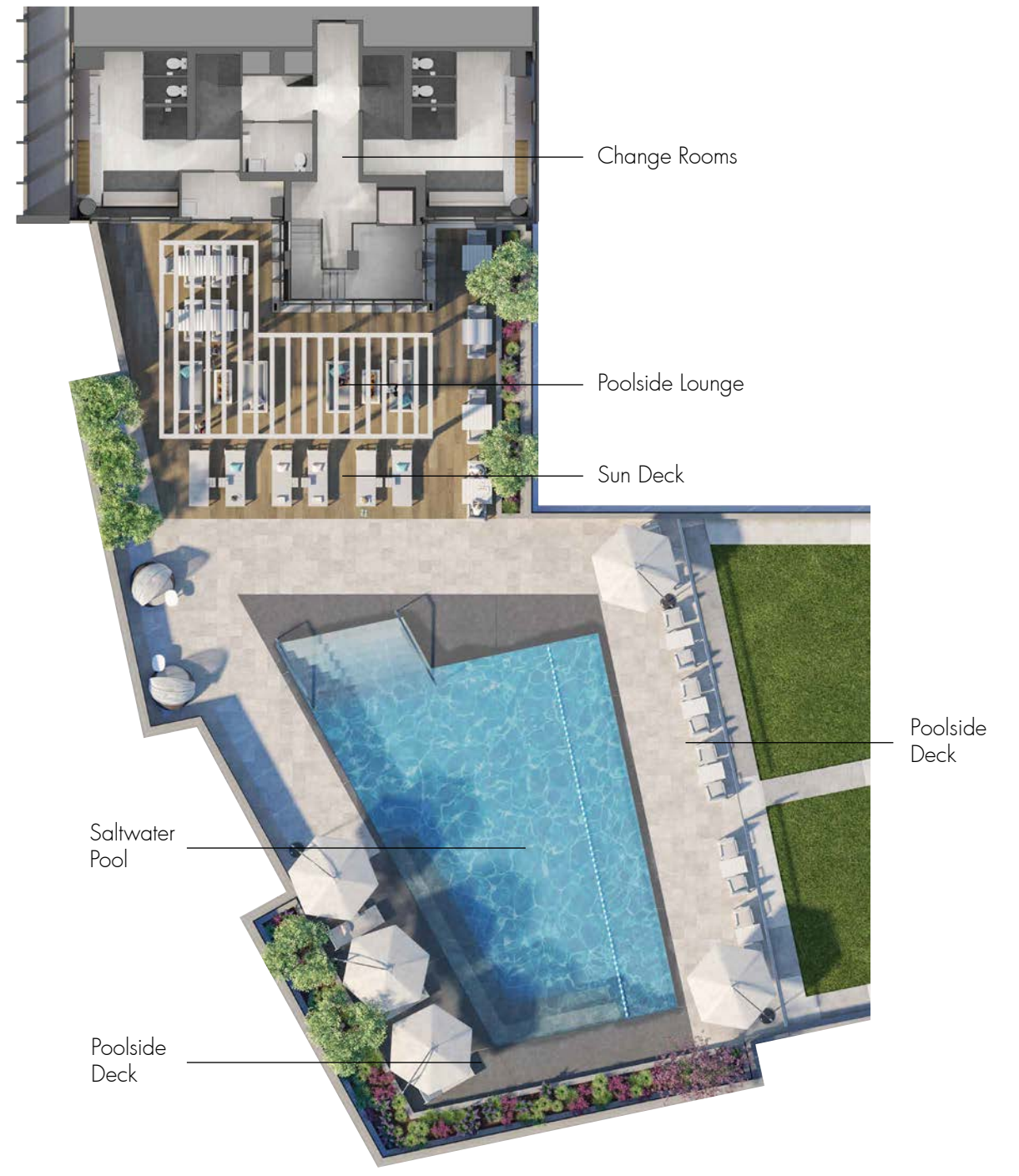


Illustration is artist's impression.

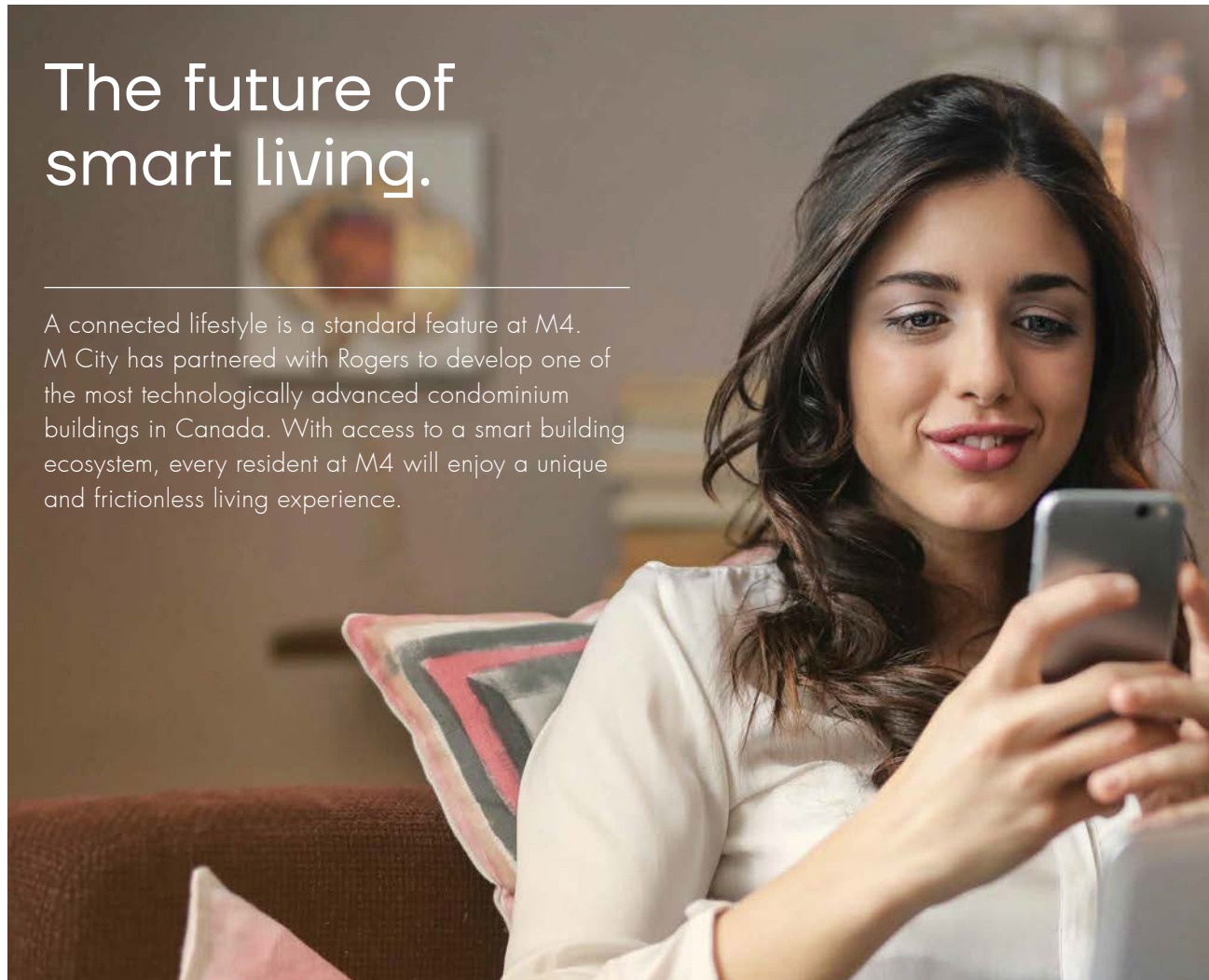


Illustration is artist's impression.



# The future of smart living.

A connected lifestyle is a standard feature at M4. M City has partnered with Rogers to develop one of the most technologically advanced condominium buildings in Canada. With access to a smart building ecosystem, every resident at M4 will enjoy a unique and frictionless living experience.



**ROGERS SMART COMMUNITY™**  
In partnership with IVALET, Rogers Smart Community helps ensure safety and convenience are always at your fingertips. Every resident will have access to a smart-phone-centric living experience which includes hands-free digital building access, video guest verification, facial recognition and more.

**IGNITE INTERNET™**  
Exclusive to M City, every suite comes wired with Rogers Ignite Internet Gigabit. With download speeds of up to 1.5 Gigabit per second\*, you can enjoy the true freedom of a consistent connection, perfect for Netflix marathons, virtual meetings, online gaming, smart appliances and so much more.

**WIFI COVERAGE**  
With an advanced fibre-powered network, you can enjoy secure, state-of-the-art wall-to-wall WiFi coverage in your home and throughout the amenity spaces at M4. The Rogers Ignite WiFi promise delivers an effortless connected home experience whether you're lounging on the couch or poolside with friends.

**DAS SYSTEM**  
Exclusive to M4, the Distributed Antenna System (DAS) that is 5G ready, distributes Rogers wireless network throughout the building to increase wireless connectivity in places like your underground parking garage and elevators where it may be harder to get a consistent connection. That means reliable coverage to make calls, access data, stream music and more.

## ROGERS SMART COMMUNITY

### APP FEATURES:

This smartphone-based service with its wide range of app features keeps you connected to your home and provides the freedom to control your environment from the palm of your hands.

play video



### SMART LOCK

Every suite comes standard with an integrated smart lock for unprecedented access control directly from your phone.



### SMART THERMOSTAT

Every suite comes standard with an integrated smart thermostat which allows you to control your home's temperature remotely; create heating and air conditioning schedules for comfort and energy efficiency.



### SMARTPHONE VIDEO CALLING

See who's at the building entrance before letting them in.



### FACIAL RECOGNITION ENTRY

Enter your building with only a smile.



### PACKAGE DELIVERY

Never miss another delivery notification.



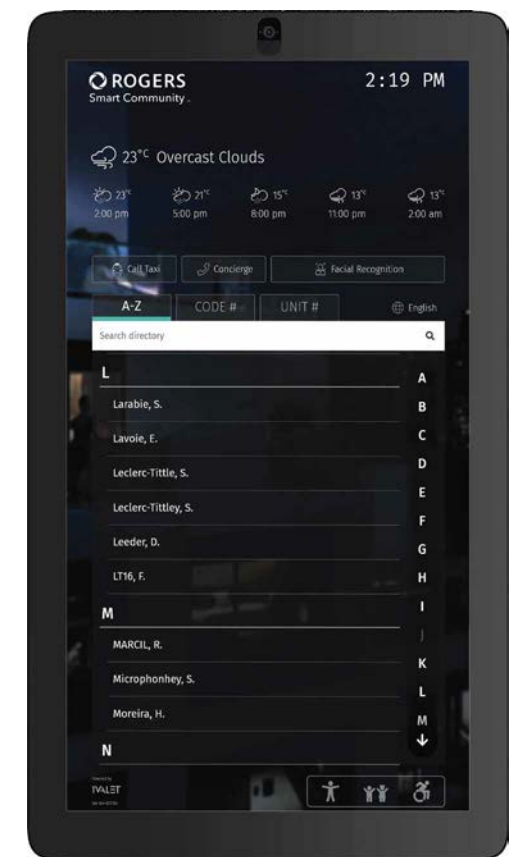
### DIGITAL KEYS

Enter your building and suite using only your mobile phone.



### COMMUNITY MESSAGING & AMENITY BOOKING

Receive building messages and news directly on your phone. Schedule and book your condo amenities from anywhere, anytime.



**ROGERS** Smart Community Powered by **IVALET**

\*Speeds may vary with internet traffic, server gateway/router, computer (quality, location in home, software and applications installed), home wiring, home network or other factors. An Ethernet/wired connection and at least one additional wired or wireless connection are required to reach maximum download speeds of up to 1.5 Gbps for Ignite Internet Gigabit. See Acceptable Use Policy at rogers.com/terms. ™Trademarks of or used under license from Rogers Communications Inc. or an affiliate. ©2021 Rogers Smart Community and Bulk Internet Service monthly fees apply and are included in the common element budget. Refer to Condominium Documents for details. The Rogers Smart Community features, products and services described and/or depicted herein are subject to change in the sole and absolute discretion of Rogers Communications Inc. depending on the features, products and services ultimately integrated with the Rogers Smart Community program at the time of installation.



Artwork: Colville Goose 6179 (Silver Dollar), 2013 © William Eakin / courtesy Stephen Bulger Gallery

Illustration is artist's impression.

### Made For Living

Designed for the modern, ever-changing life, each suite offers efficient and highly livable open-concept floor plans, kitchens with integrated appliances and custom cabinetry with increased depth for greater storage, expansive windows, and private outdoor spaces. Your home at M4 offers the best of condo living and opportunities for customization with three distinct finish packages and other available options to suit your needs.



Artwork: Willow, Ward's Island, Toronto, 2005 © Geoffrey James / courtesy Stephen Bulger Gallery

Illustration is artist's impression.

LIGHT SCHEME

Artwork: Colville Wolf 6275 (Half Dollar), 2013 © William Eakin / courtesy Stephen Bulger Gallery



MEDIUM SCHEME

Artwork: Colville Hare 6093 (Nickel), 2013 © William Eakin / courtesy Stephen Bulger Gallery



DARK SCHEME

Illustrations are artist's impressions.

Artwork: Cheinui, Spadina House, Toronto, 2005 © Geoffrey James / courtesy Stephen Bulger Gallery



MEDIUM SCHEME

Artwork: Apple Tree, New York State, 2005 © Geoffrey James / courtesy Stephen Bulger Gallery



DARK SCHEME

explore your suite ●

### Building Features

- \_ CORE Architects-designed 67-storey metal and glass tower with 8-storey podium
- \_ Interiors by Cecconi Simone Inc
- \_ 11 residential elevators + one commercial elevator
- \_ Eight-level underground garage for residential, visitor, and commercial parking. Residential parking separated and secured from visitor and commercial parking

### Building Amenities

- \_ Lobby with 24 hr. concierge, fireplace lounge, shared work area, and automated parcel storage room
- \_ Outdoor saltwater pool with poolside seating, sun deck, shade trellis, and indoor change rooms
- \_ 'Nakaniwa Garden' open air courtyard with waterfall, water sculpture, and rock garden
- \_ Fitness centre with cardio, weight training, and spinning
- \_ Yoga/dance studio with adjacent outdoor yoga area
- \_ Outdoor amenity terrace with multiple lounge areas, firepits, BBQs, private dining areas, Cabanas, TVs, bar, and hammocks
- \_ 'The Retreat' outdoor area with architectural bench seating and privacy landscaping
- \_ Party room with dining, prep kitchen, fireplace lounge, and TV
- \_ Games/screening room
- \_ Outdoor kids' playground
- \_ Indoor kids' playroom and party space
- \_ Wi-fi lounge work area
- \_ Onsite Property Management Office

### Suite Details

- \_ Cecconi Simone custom designed suites with choice of finishes from designer's curated selections
- \_ Floor-to-ceiling height of approximately 9 feet

- in principal rooms excluding mechanical system bulkheads\*
- \_ Smooth ceiling finish
- \_ Pre-finished vinyl flooring in all living areas and bedrooms, from designer's curated selections
- \_ Custom designed suite entry doors with contemporary hardware and smart door lock integrated with Rogers Smart Community\*\*
- \_ Stacked 24" washer and dryer laundry centre
- \_ Floor tile in laundry area
- \_ Satin nickel finish hardware on interior swing doors

### Kitchens

- \_ Cecconi Simone custom designed kitchen cabinetry with undercabinet lighting
- \_ Quartz countertop with square edge profile, and tile backsplash
- \_ Under-mount stainless steel sink and single lever chrome faucet with pull-down spray head
- \_ All suites with 24" integrated fridge, 24" integrated dishwasher, 24" stainless steel slide-in range, range vent, and stainless-steel microwave

### Bathrooms

- \_ Cecconi Simone custom designed vanity and medicine cabinet with mirror and under-cabinet lighting
- \_ Quartz countertop with square edge profile
- \_ Under-mount sink with contemporary single-lever faucet
- \_ Floor and wall tiles as per plans
- \_ Frameless glass shower enclosure and full-height wall tile for separate showers as per plans
- \_ Acrylic shower pan as per plan
- \_ Rectangular-design white acrylic soaker tub with full-height tile tub surround as per plans
- \_ Contemporary low-flush toilets
- \_ Pressure balanced valve(s) for tub and/or shower
- \_ Recessed lighting
- \_ Exterior vented exhaust fan

- \_ Contemporary low flush toilet
- \_ Accessory package including towel bar and toilet paper holder, where applicable

### Technology, Communication, and Electrical Features

- \_ Rogers Smart Community entry console in lobby vestibule with smartphone video calling, opt-in facial recognition, parcel delivery scanner, contactless building access and additional features\*\*
- \_ Pre-installed Rogers Smart Community package in every suite, including smart door lock on suite entry door, smart thermostat, and integration with IVALET app\*\*
- \_ Rogers Ignite™ Gigabit 1.5Gbps internet service including advanced wi-fi modem and unlimited data usage\*\*
- \_ Advanced fibre-powered WiFi network offering seamless internet connectivity throughout the building and amenity areas
- \_ Distributed Antenna System (DAS) for increased Rogers wireless network connectivity throughout the building for reliable coverage to make calls, access data, stream music, and more.
- \_ All suites are pre-wired for video, voice and internet by way of one (1) hardwired outlet in main living area
- \_ Fibre feed to each suite, with 4K and IPTV capability
- \_ Electrical service panel with breakers in all suites
- \_ Switch controlled receptacles in living areas and bedrooms, down-lighting in foyer, track lighting in kitchen

### Safety and Security Features

- \_ Rogers Smart Community entry console in lobby vestibule with smartphone video calling, opt-in facial recognition, parcel delivery scanner, contactless building access and additional features

- \_ Electric fob-based access system at main building entry points and amenity areas
- \_ Closed circuit cameras at strategically located entry points
- \_ 24 hr. front desk concierge service
- \_ Alerts and property management messages and news sent directly to your smartphone with IVALET app
- \_ Fully sprinklered for fire protection
- \_ Smoke detectors in every suite and all common areas
- \_ Garage is painted white and brightly lit
- \_ Secured storage locker rooms

### Environmental Features

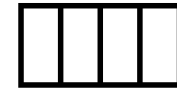
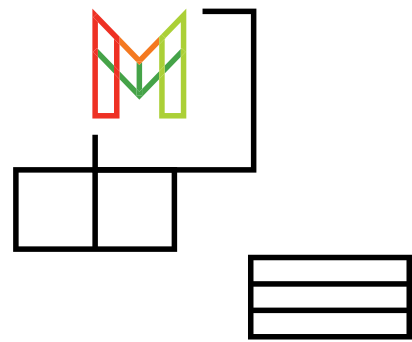
- \_ Energy efficient HVAC system with energy recovery ventilator (ERV) reduces heating and cooling costs and brings fresh air directly into the suite
- \_ Individually controlled heating and cooling
- \_ Smart thermostat can be adjusted remotely with Rogers Smart Community powered by IVALET app\*\*
- \_ Individual suite metering of utility consumption\*\*\*
- \_ Exterior glazing with Low E glass
- \_ Energy Star™ rated Appliances where applicable
- \_ Low flush toilets
- \_ Systems commissioning to ensure building energy systems are properly installed and calibrated

### Homeowner Warranty Protection

- \_ Tarion Warranty Corporation New Home Warranty Protection
- \_ One-Year, Two-Year and Seven-Year Warranty Protection as per Tarion Construction Performance Guidelines
- \_ Manufacturer's warranty on appliances

Notes: \*Ceiling heights are subject to bulkheads, exposed ducts, dropped ceilings and structural beams. \*\*Rogers Smart Community and Bulk Internet Service monthly fees apply and are included in the common element budget. Refer to Condominium Documents for details. The Rogers Smart Community features, products and services described herein are subject to change in the sole and absolute discretion of Rogers Communications Inc. depending on the features, products and services ultimately integrated with the Rogers Smart Community program at the time of installation. \*\*\*Refer to Condominium Documents for further information about suite metering. All Features and Finishes are subject to change without notice. E.&O.E. March 2021.

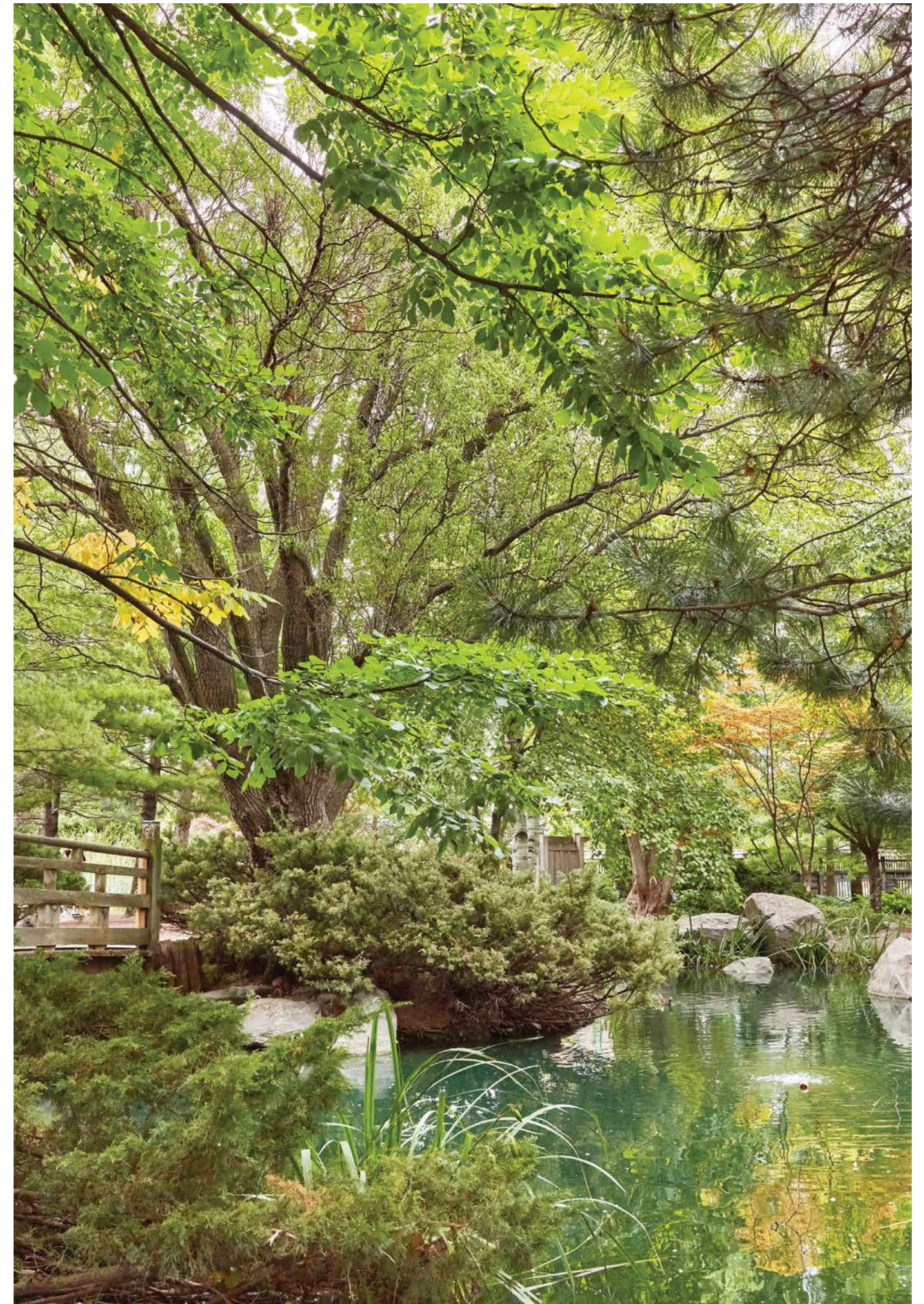
## One remarkable neighbourhood.



---

### At The Centre Of It All

M City is in the heart of Mississauga City Centre. A lively, colourful and diverse neighbourhood. Steps from Celebration Square, Living Arts Centre and Art Gallery of Mississauga; the premier shops and department stores at Square One; the serene oasis of Kariya Park; and the ever-changing culinary landscape of trendy restaurants and popular favourites, M City is your launch pad for endless attractions in the downtown district. So, step out, explore and have fun.







**Shops/Groceries**

- 1 GoodLife
- 2 Indigo
- 3 Square One Shopping Centre
- 4 T&T Supermarket
- 5 Whole Foods Market
- 6 Wholesale Club

**Restaurants/Cafés**

- 1 Alioli Ristorante
- 2 Blackjack BBQ
- 3 Dal Moro's Fresh Pasta
- 4 Earls
- 5 Jack Astor's
- 6 Kelseys
- 7 Kinton Ramen
- 8 La Carnita
- 9 Reds
- 10 Scaddabush
- 11 The Alley Bubble Tea
- 12 Uncle Tetsu's Cheesecake
- 13 Village Juicery

**Landmarks/Amenities**

- 1 Art Gallery of Mississauga
- 2 Central Library
- 3 Cineplex Cinemas
- 4 Living Arts Centre
- 5 Marilyn Monroe Towers
- 6 Mississauga Celebration Square
- 7 Mississauga City Hall
- 8 Paramount Centre
- 9 The Rec Room
- 10 YMCA Centre

**Parks**

- 1 Bud Cleary
- 2 City View Park
- 3 Dr. Martin L. Dobkin Park
- 4 Fairview Park
- 5 Kariya Park
- 6 Zonta Meadows Park

**Schools**

- 1 Bishop Scalabrini School
- 2 Corpus Christi School
- 3 Fairview Public School
- 4 Father Michael Goetz Catholic Secondary School
- 5 Sheridan College – Hazel McCallion Campus
- 6 University of Toronto (Mississauga)

**Transit**

- 1 City Centre Transit Terminal
- 2 Cooksville GO
- 3 Square One GO Bus Terminal

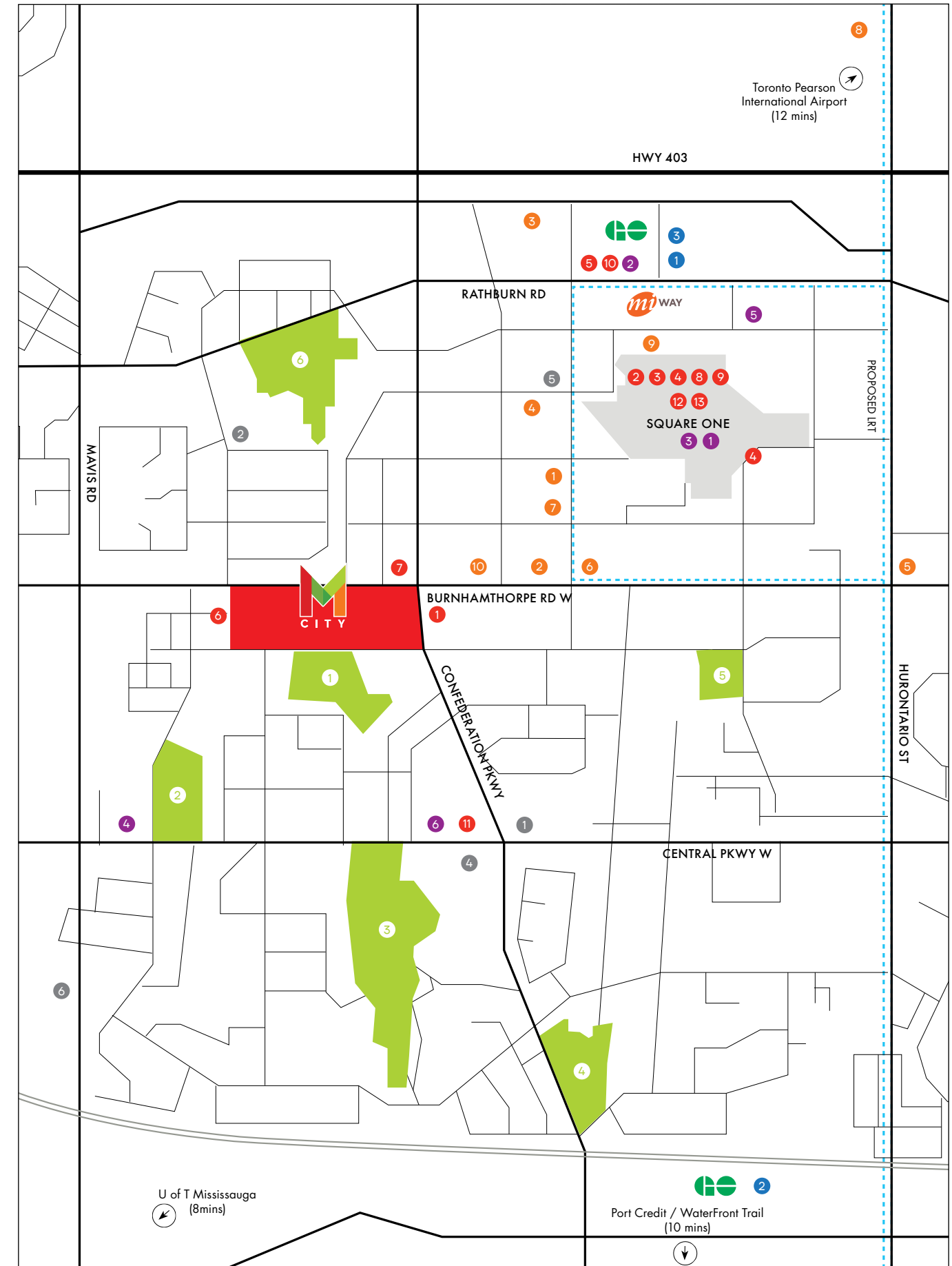


Illustration is artist's impression.

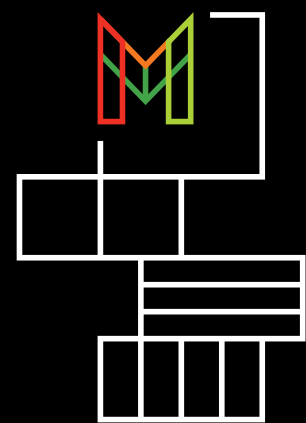


EAST VIEW



SOUTH VIEW

## Creators and collaborators.



---

M City is the product of many minds. From the award-winning development team to the internationally acclaimed architects and designers, urban planners, engineers to marketing and sales professionals, this multidisciplinary group is inspired by a singular vision – to create a world class community that will be a catalyst for the future of Mississauga's City Centre.

**ROGERS REAL ESTATE DEVELOPMENT LIMITED**

Rogers Real Estate Development Limited is the owner and developer of M City. The company is part of an affiliated group of companies, which together represent the Rogers family private holding companies. The Rogers family private holding companies are the majority and controlling shareholders of Rogers Communications Inc., a leading diversified public Canadian communications company created by one of Canada's all-time business giants, Ted Rogers.

The development of M City will continue Rogers' long history in Mississauga. In the 1960's Ted Rogers purchased 43 hectares of farmland in Mississauga on which to locate transmitters for one of his first business

ventures, radio station CHFI. CHFI remains Toronto's number one rated radio station to this day. When the transmitters were relocated in the early 1990s, the site was retained by Ted and "we developed much of it and sold it to builders for new homes." The current site was re-zoned in 2002 to allow for a wider possibility of land uses including increased residential development. Rogers Real Estate Development Limited has engaged the services of Urban Capital to manage the development of M City. "It is our intention for the launch of M City to be viewed as a catalyst for downtown Mississauga and we are honoured to have the opportunity to transform a long-held family asset into a new, lively community in the burgeoning downtown."

**URBAN CAPITAL**

Urban Capital is one of Canada's leading developers with an award-winning reputation for architectural design, environmental sustainability, and a commitment to cities. Working in partnership with the best architects, designers and planners, the company is widely recognized for its pioneering role in bringing high-design urban living across Canada. Consistently named among the top 5 condo

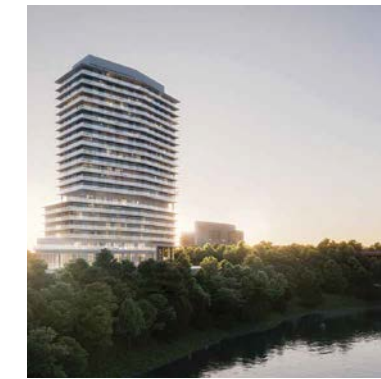
developers in Toronto, Urban Capital has over 9,300 condominium units developed or under development since 1996. With a reputation as urban regenerators, the company has brought its high standards and visionary approach to neighbourhood-conscious developments in Toronto, Halifax, Ottawa, Montreal, Winnipeg and Saskatoon. [urbancapital.ca](http://urbancapital.ca)

**SELECTION OF CURRENT AND COMPLETED  
PROJECTS BY URBAN CAPITAL**

**DEVELOPMENT  
TEAM**



M City



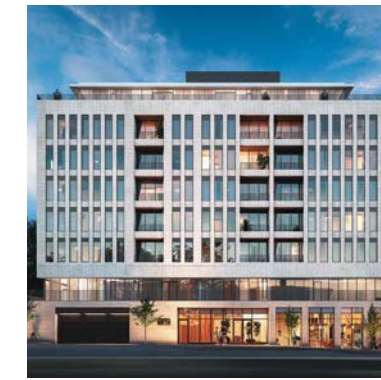
Kingsway by the River



Cite Midtown



Reina



Nrth



Ravine



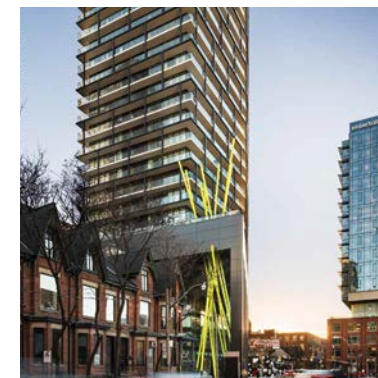
Harris Square



Queensway Park



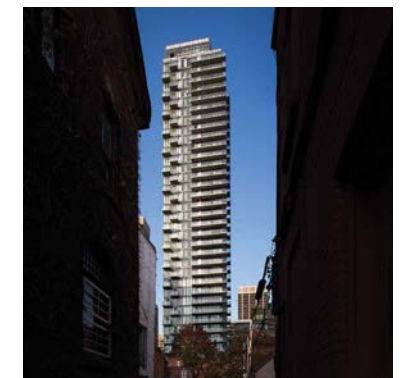
River City



Tableau



Smart House



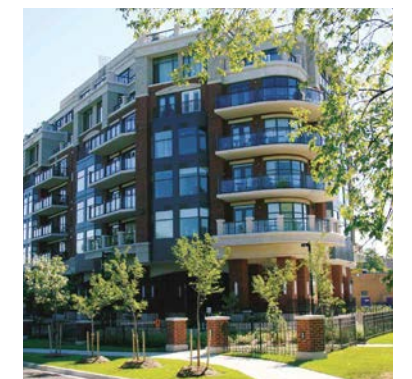
Nicholas



Boutique



Trinity Townes



St. Andrew

## Architect

### COREARCHITECTS

CORE Architects is an award-winning firm of architects and interior designers based in Toronto. Since its formation in 1996, CORE has quickly distinguished itself by its innovative yet thoughtful design solutions, focusing on creativity, innovation and sustainability. CORE's portfolio includes over 150 condominium projects, 50 of which are in the downtown core of Toronto; the urban master planning for over 200 million square feet of residential development internationally, numerous private residences and recreational and sports clubs, restaurants, hotels and resorts, office environments and over 1500 retail rollouts across Canada and internationally. [corearchitects.com](http://corearchitects.com)

## Interior Designer

### CECCONI SIMONE

Cecconi Simone is an award-winning interior-design practice based in Toronto, Canada, privately owned and operated by Elaine Cecconi and Anna Simone. Established in 1982, Cecconi Simone has designed some of the most beautiful and successful interior environments for the retail, corporate, hotel-hospitality and residential sectors in Canada, the United States, Anguilla, Italy, Spain, the United Arab Emirates, Qatar, India and China. Cecconi Simone has positioned itself as an industry leader, designing intelligent, progressive and brand-specific interiors for a diverse cross-section of projects around the world. [ceconisimone.com](http://ceconisimone.com)

## Master Planner

### COOPER ROBERTSON

Cooper Robertson practices award-winning architecture and urban design with both disciplines working together at a range of scales. The firm skillfully addresses large-scale urban design challenges, shapes major cultural and educational buildings, and crafts exceptional resorts and private residences. In all of the firm's work, Cooper Robertson seeks to wed practicality and professional rigor with art and design; to combine reason and passion. The firm's work is borne from the careful consideration of uniqueness of place and connectivity to context and is realized through outstanding technical ability and deft understanding of requirements. [cooperrobertson.com](http://cooperrobertson.com)

## Structural Engineer



Specializing in structural engineering, building science, and structural restoration, RJC Engineers is one of North America's leading engineering firms having worked on many of Canada's premier residential projects including M City. Throughout its 72-year history, the company has demonstrated creative thinking and technical excellence in the structural design of buildings. With a staff of nearly 600 across the country, clients benefit from highly personalized service at the local level with the depth, and resources of a large, national firm. RJC has the largest team of structural engineers specializing in building design in Toronto, with a staff of nearly 200. [rjc.ca](http://rjc.ca)

## Civil Engineer



WSP is one of the world's leading professional services consulting firms. Dedicated to the local communities and propelled by international brainpower, the team consists of technical experts and strategic advisors including engineers, technicians, scientists, architects, planners, surveyors and environmental specialists, as well as other design, program and construction management professionals. The company designs lasting solutions in the Transportation & Infrastructure, Property & Buildings, Environment, Power & Energy, Resources and Industry sectors, as well as offers strategic advisory services. [wsp.com](http://wsp.com)

## Landscape Architect



The Planning Partnership (TPP) is an interdisciplinary landscape architecture, urban design and planning firm based in Toronto. The firm currently has a staff of 30 led by 7 partners with specializations in Planning, Urban Design, Landscape Architecture and Public Consultation. The firm is recognized for its unique collaborative approach to identifying opportunities for change and for problem solving. TPP has prepared specific designs and studies related to transit oriented developments, downtown revitalization, community design, waterfront planning and park design. [planpart.ca](http://planpart.ca)

## Mechanical/Electrical Engineer



Founded in 1965, Smith + Andersen is a trusted Canadian consulting engineering firm with offices in Vancouver, Kelowna, Calgary, Edmonton, Winnipeg, London, Toronto, Ottawa, and Halifax. Reputed mechanical and electrical consultants, it has reached new levels of engineering and design excellence in the communications, security, and audio-visual fields, and provides enhanced services such as lighting, building automation systems, and intelligent integrated systems design. Known for its client-focussed approach, the company's efficient, sustainable and reliable design and engineering solutions can be seen in some of the most exciting projects in Canada. [smithandandersen.com](http://smithandandersen.com)

## Sales



With annual new home sales of over two billion dollars, Baker Real Estate Inc. is one of Canada's most successful real estate companies. For over two decades, Baker has specialized in the project marketing and sales of new home communities, including condominiums, townhomes and single-family homes as well as hotel condominiums and resort properties. The company was formed by Pat Baker and has grown into a prestigious group of real estate professionals, servicing Canada's premier builders and developers in both local and international markets. Baker has established offices in Toronto, Montreal, Beijing, Singapore, Hong Kong and most recently in Shanghai. [baker-re.com](http://baker-re.com)

## Branding and Marketing



L.A. is one of North America's foremost companies specializing in branding, marketing, and communications for major real estate developments. Inspired by its motto, 'creativity is the only advantage,' the Toronto based firm has created memorable brands and award-winning marketing programs for developments across Canada and the United States. [la-ads.com](http://la-ads.com)

## Public Relations



KG&A is an award-winning communications strategy and public relations firm with a niche focus in architecture, real estate development and city building. They know the local and international media landscape inside and out and pride themselves on being renowned for their event concepts and stakeholder engagement. Their campaign strategies repeatedly foster partnerships transform business and maximize impact for clients. KG&A is considered one of the best kept secrets in the business. [kg-inc.com](http://kg-inc.com)

MISSISSAUGA'S FUTURE  
STARTS HERE.



---

## M City Presentation Centre

505 Webb Drive  
Mississauga, ON L5B 4A4  
905.232.0552  
[info@mcitycondos.com](mailto:info@mcitycondos.com)

[mcitycondos.com](http://mcitycondos.com)