

# PH03

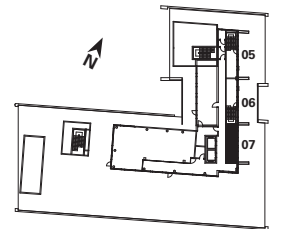
**3 BEDROOM**

1705 sq.ft.

190 sq.ft. Terrace + 120 sq.ft Balconies



**LOWER**



FLOOR 10



FLOOR 9

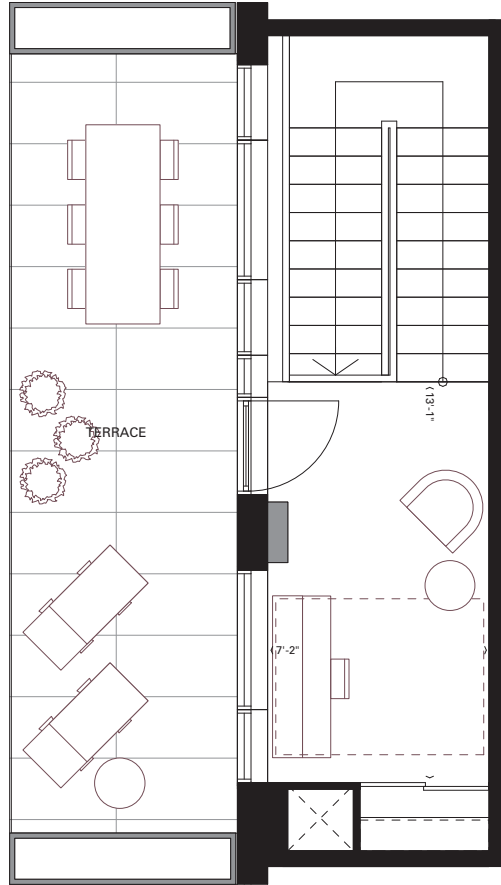
Furniture not included. Actual floor area may differ from stated floor area; see APS for details. All prices, sizes and specifications are subject to change without notice. E.&O.E May 7, 2023.

# PH03

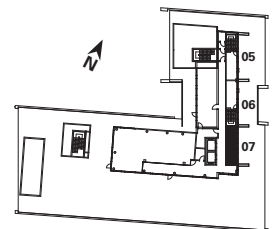
**3 BEDROOM**

1705 sq.ft.

190 sq.ft. Terrace + 120 sq.ft Balconies



## UPPER



Furniture not included. Actual floor area may differ from stated floor area; see APS for details. All prices, sizes and specifications are subject to change without notice. E.&O.E May 7, 2023.